

# LO<sup>®</sup>

## LO Merge<sup>®</sup>

Product information sheet



## Product range

LO

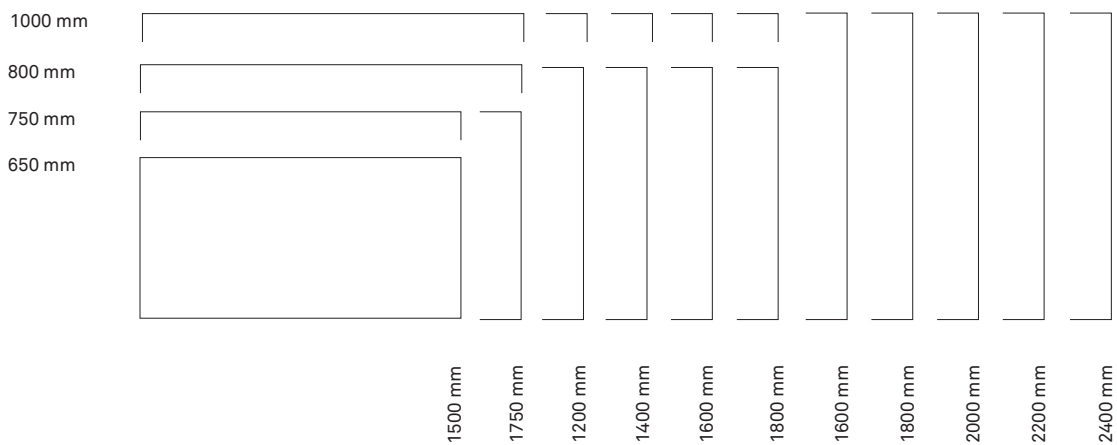
LO Merge meeting table, a solution suitable for several applications, offers proven quality and is manufactured in Switzerland.

The table and seat range is optionally available with steel frame and legs or completely in solid wood.



### Meeting table, steel version, rectangular

Available heights: 730 mm and 1100 mm

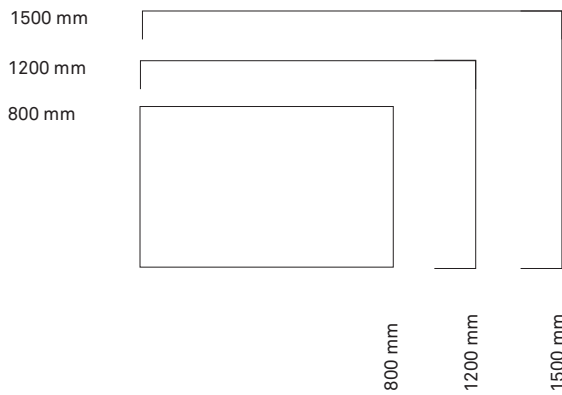


# Product range

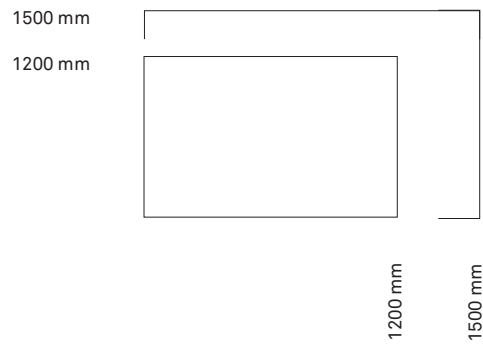


## Meeting table, steel version, square

For 730-mm height:

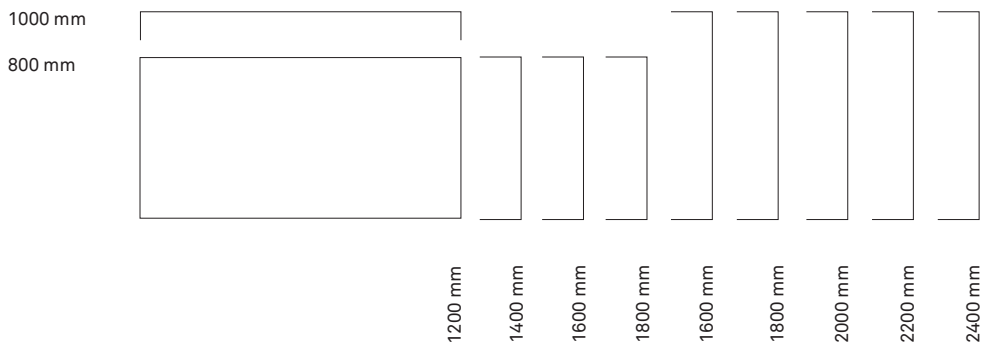


For 1100-mm height:



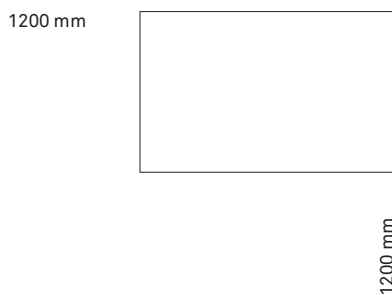
## Meeting table, wooden version, rectangular

Available heights: 730 mm and 1100 mm.

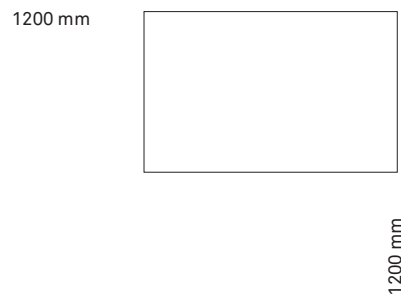


## Meeting table, wood version, square

For 730-mm height:



For 1100-mm height:



## Product range

# LO

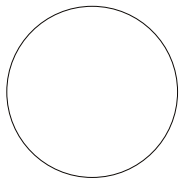
### Side table, steel version, round

Available heights – 730 mm and 1100 mm:

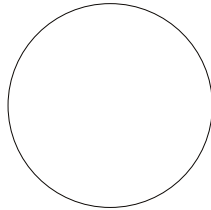
3 feet

4 feet

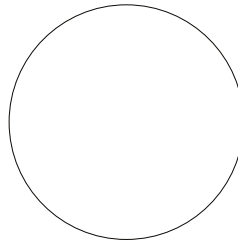
4 feet



Ø 700 mm



Ø 1000 mm



Ø 1500 mm

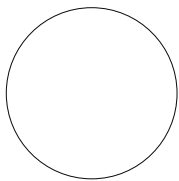


### Side table, round version, wood

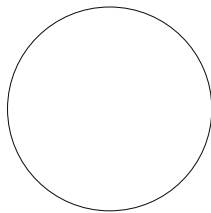
Available heights – 730 mm and 1100 mm:

3 feet

4 feet



Ø 700 mm



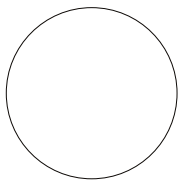
Ø 1000 mm



### Coffee table with steel legs

Available heights – 450 mm:

3 feet



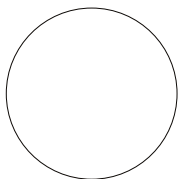
Ø 700 mm



### Coffee table with wooden legs

Available heights – 450 mm:

3 feet



Ø 700 mm



## Product range

# LO

### **Bench with steel legs**

Available heights – 450 mm:

400 mm



1600 mm  
1800 mm  
2000 mm  
2200 mm  
2400 mm

### **Bench with wooden legs**

Available heights – 450 mm:

400 mm



1600 mm  
1800 mm  
2000 mm  
2200 mm  
2400 mm

### **Stool with steel legs**

Available heights – 450 mm and 800 mm



Ø 350 mm

### **Sitzhocker with wooden legs**

Available heights – 450 mm and 800 mm



Ø 350 mm

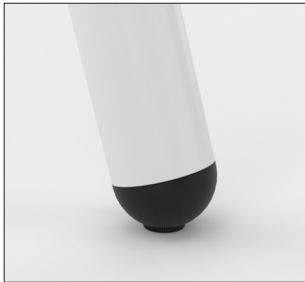
## Details

# LO

Simple and imposing tables for the living room with a new range of matching seats with steel or wooden legs.

When two high-quality and sustainable materials merge, the result is the LO Merge solid wood table. Filigree and elegant steel struts leading to the solid wood leg lend the table a unique style.

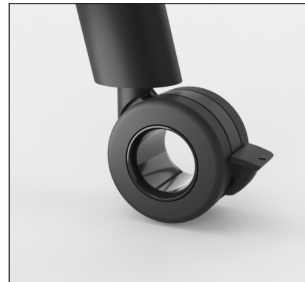
The seat stools as well as the 3-legged table are equipped with a steel ring to lower the legs' and feet's stress while sitting.



Plug



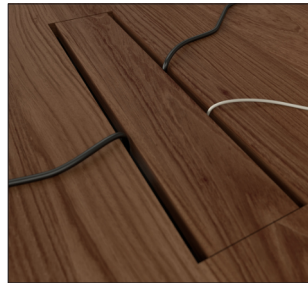
Wooden base with struts



Rollers



Bachmann power frame precut hole



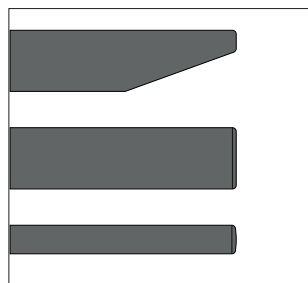
Precut hole with magnetic plate



Bachmann twist precut hole



Plate radius



Edges bevelled/straight

### **Wood as a natural product**

Wood is a natural product; the range of natural colours, structures and other differences of a particular wood type are features of the natural product wood and do not constitute grounds for complaint or liability.

Slight differences in colour may also occur due to the surface treatment of the feet and wooden panels.

### **Wood and humidity**

Wood is hygroscopic and adapts to its surrounding climate. Shrinkage, swelling, warping and cracks are natural and do not constitute grounds for complaint. Rather, it underlines the naturalness of the material.

As a natural material, wood constantly absorbs and releases moisture. Therefore, furniture should not be exposed to extremely high or low humidity.

For indoor spaces, a relative humidity of 45-55% and a temperature of 18-23° C is recommended as an annual average.

Wood reacts to fluctuating indoors temperature and air humidity – also due to seasonal changes. Warpage, shrinkage or fine hairline cracks may occur. However, these signs of use do not affect the life of the furniture.

### **Wood and exposure to light**

Strong artificial light and especially sunlight changes surfaces and particularly that of wood. This causes natural woods to yellow and stained woods to fade. It is essential to protect your valuable furniture from extreme exposure to light, as the material prevents achieving 100% light fastness.

Irregularities, small cracks, indentations or pressure marks are signs of authenticity and special wood features. Careful care and cleaning extend the life of your furniture. Read the cleaning and care instructions.

## Warranty

LOG Produktions AG guarantees Lista Office LO products for five years from delivery ex works. A five-year warranty period also applies to the electric motor systems used in the product ranges LO Extend, LO Choice and LO Pure. All other bought-in parts used in our own products (such as textiles, glass components, etc.) and/or electronic components (such as software, plug boxes, etc.) are guaranteed for two years from the date of delivery. Replaces all previous price lists. We reserve the right to make changes to the prices, designs and dimensions of products. LOG Produktions AG is certified in accordance with ISO 9001 and ISO 14001.

You can find care and maintenance instructions for your product on our home page. You can find information on how to assemble and use your product in the user manual.



## Version

Version 1.0, August 2023 (date created)

Version 2.0, January 2024 (removal colours)

**Lista Office LO**  
**LOG Produktions AG**  
**Alfred Lienhard Strasse 2**  
**9113 Degersheim**  
**Switzerland**

**Telephone +41 71 372 52 52**  
**Hotline 0800 633 642**  
**info@lista-office.com**

**www.lista-office.com**