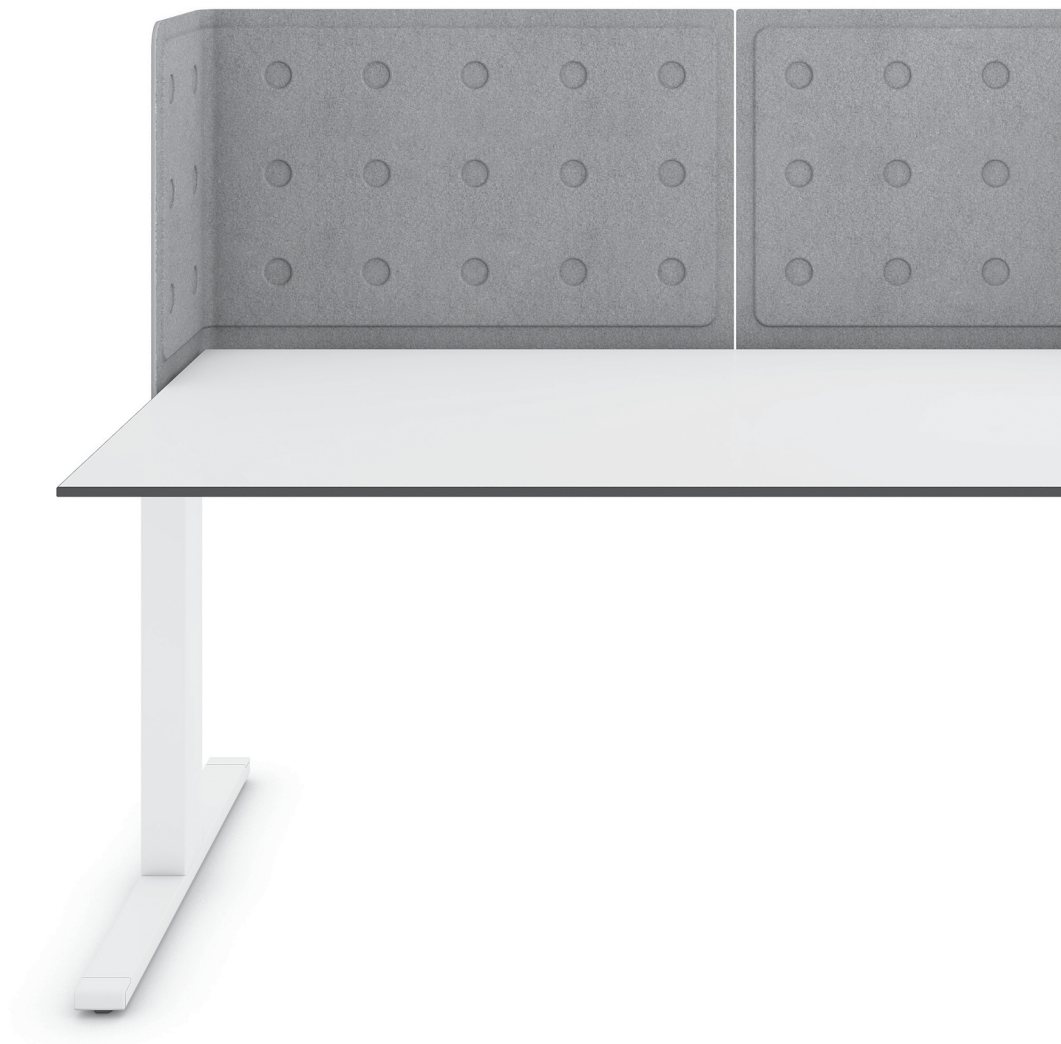


# LO<sup>®</sup>

## LOExtend<sup>®</sup>

Product information sheet

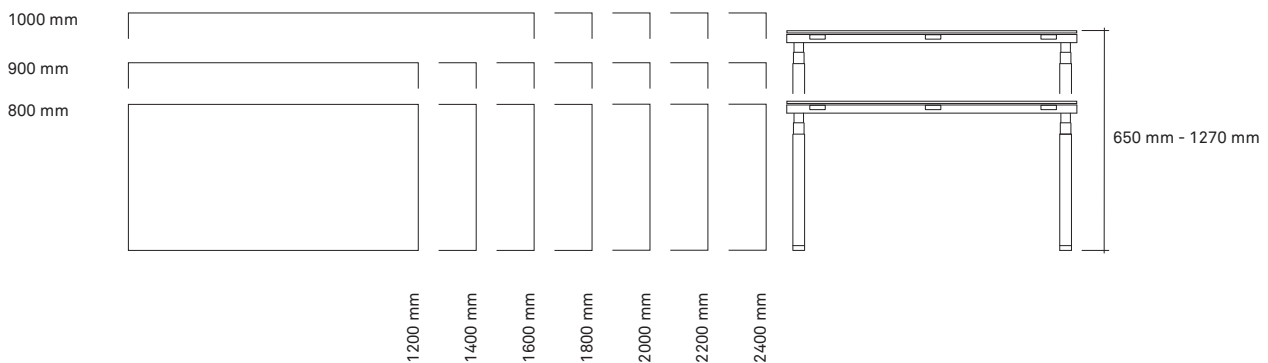


## Product range

# LO

### **Sitting/standing desk**

The LO Extend sitting/standing desk is designed without a crossbeam and with the legs on the outside for optimum legroom and ergonomics. The smooth, continuous height adjustment, featuring PIEZO™ anti-collision technology, fulfils all relevant office furniture standards at a power consumption of just 0.1 W in standby mode.



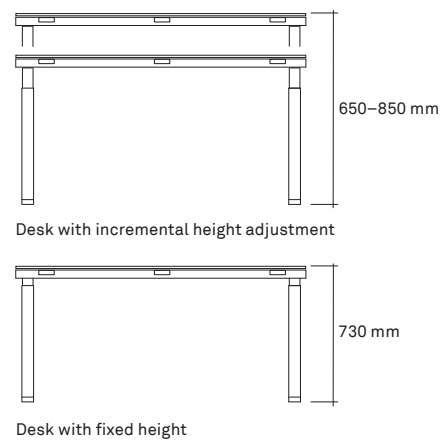
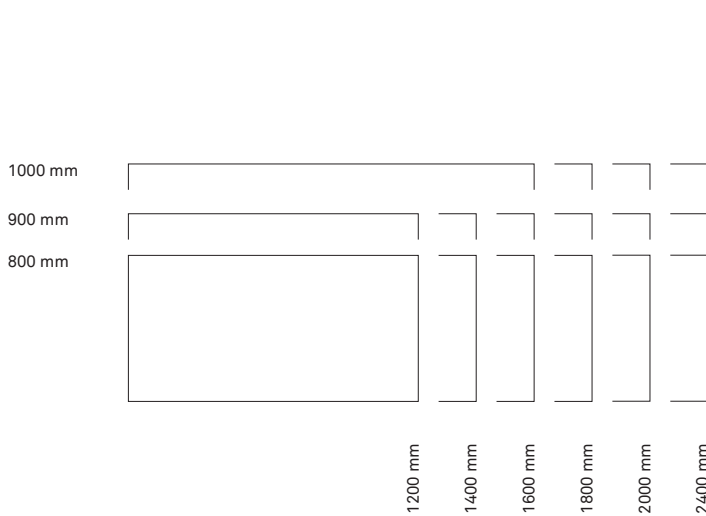
# Product range



## Desk with incremental height adjustment

### Desk with fixed height

Maximum flexibility with the LO Extend desk family. As well as electric height adjustment, the desk is also available with incremental height adjustment or fixed height.

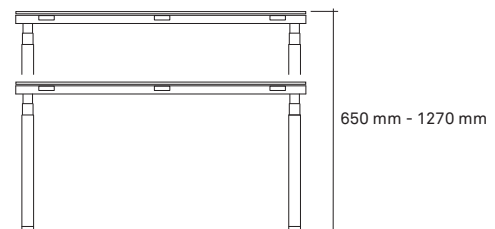
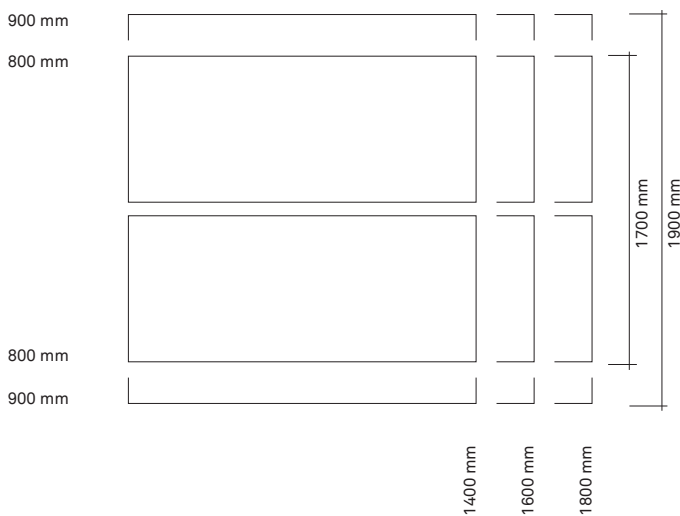
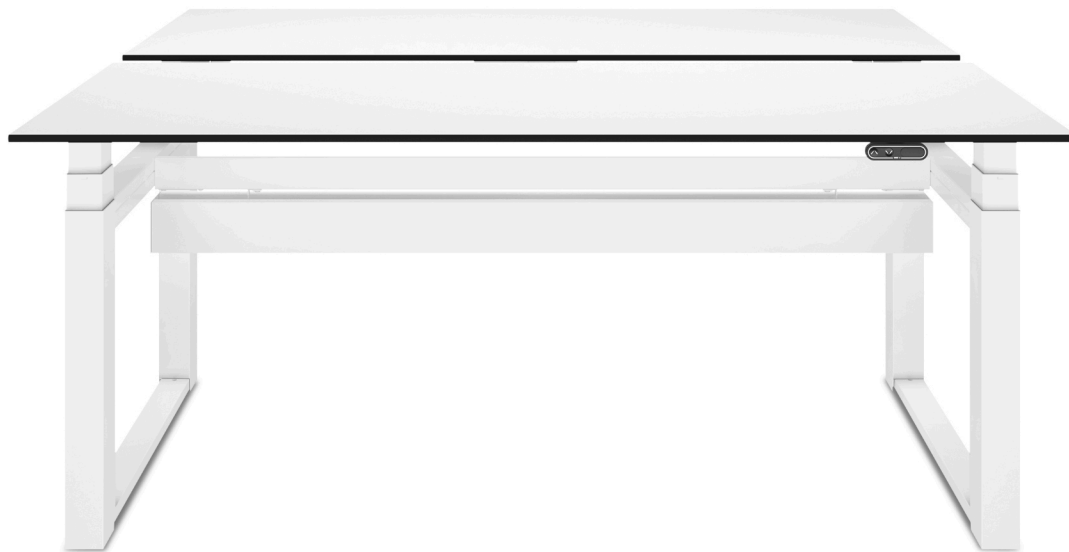


## Product range

# LO

### **Sitting/standing desk “twin”**

The shared base improves stability without detracting from the design. The shared leg, optional light connection on the desk connector and the centrally mounted privacy screen add up to a highly attractive look. For multi-desk clusters, LO Extend “twin” can be extended using the desk connector, and a privacy screen can be attached on the side.



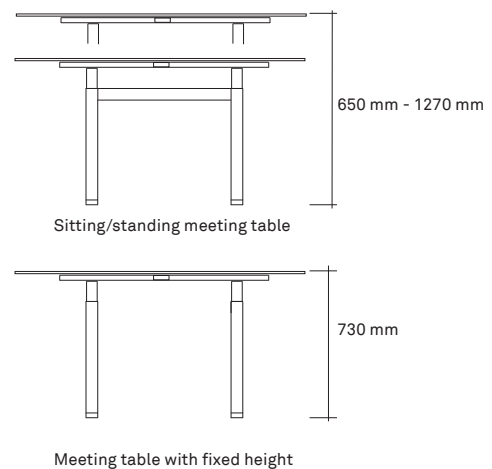
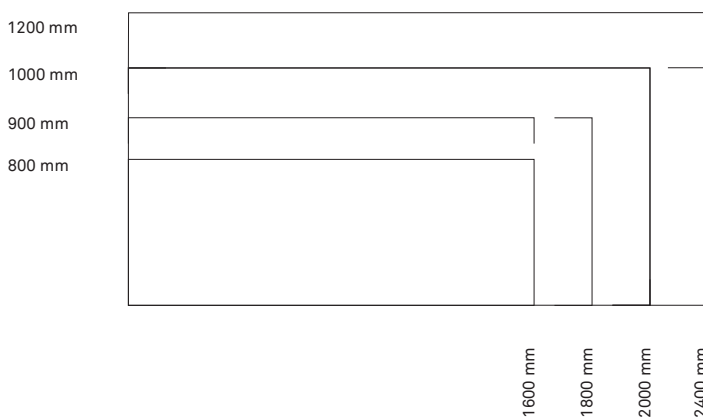
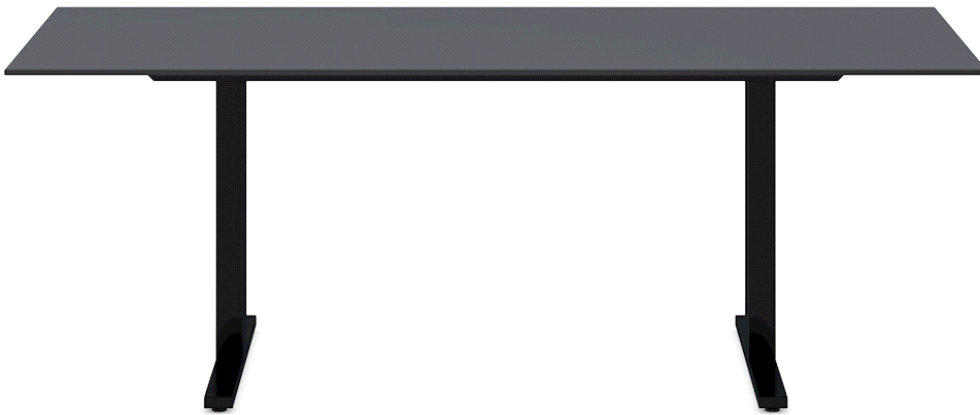
## Product range

# LO

### **Sitting/standing meeting table**

#### **Meeting table with fixed height**

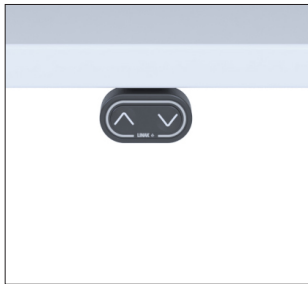
The LO Extend desk and table family is rounded off by the meeting table, which is available with electric height adjustment or fixed height. The centrally positioned legs allow free movement on all sides of the table, helping to make meetings more agile. The tabletop can optionally be fitted with various plug units.



## Details

# LO

LO Extend also impresses when it comes to details – such as cable organisation, user-friendly levelling function and dimensions that are precisely coordinated with the LO drawer unit and LO caddy.



Up/down control



Control element with display



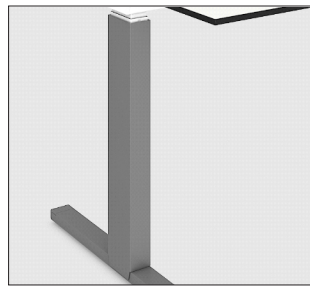
Control element with memory



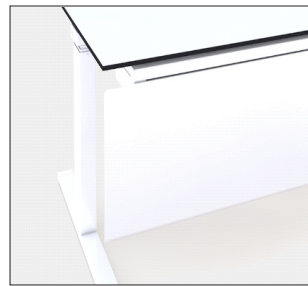
Side shelf



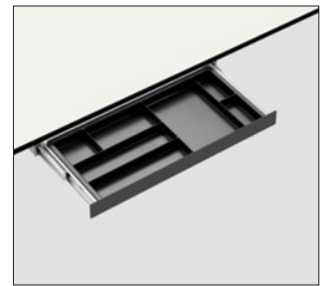
Sliding top



Leg cover



Screen for leg space



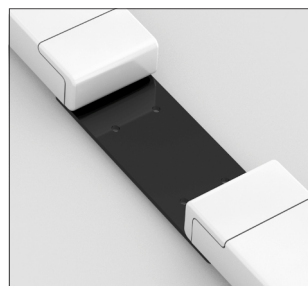
Stationery drawer



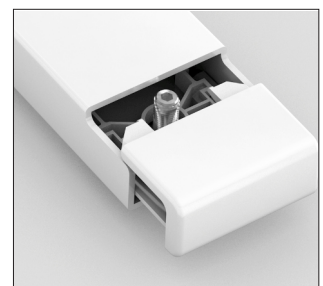
CPU holder



CPU mounting bracket



Connector



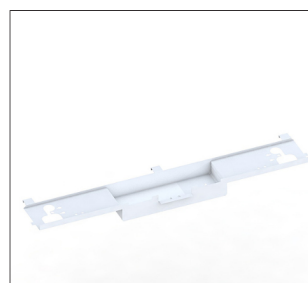
Levelling of legs



Cable conduit horizontally



Swivelling cable conduit



Drawer unit cable conduit

## Details

# LO

LO Extend also impresses when it comes to details – such as cable organisation, user-friendly levelling function and dimensions that are precisely coordinated with the LO drawer unit and LO caddy.



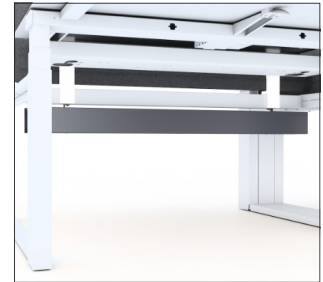
"Twin" desk connector on side



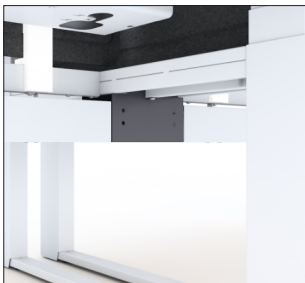
Casing for "twin" desk connector



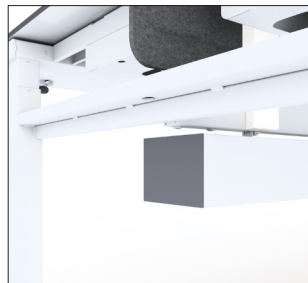
Cover for "twin" desk connector casing



Cable conduit "twin"



Connector for "twin" cable conduit



Side cover for "twin" cable conduit



Side shield with privacy screen



Light connection direct on the table chassis

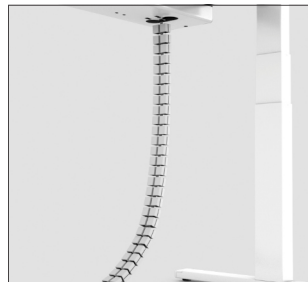
## Power supply



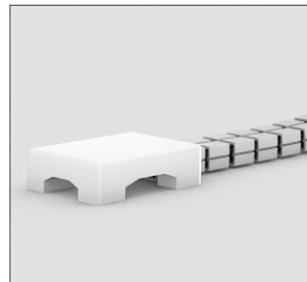
You can freely configure your desk to your requirements with our wide range of power supply options – such as a modular power strip, a magnetic plug box or a plug unit. The power supply solutions fulfil the electrical standard SEV1011:2009/A1:2012 thanks to the integrated overcurrent protection.



Cable guide vertical



Cable sleeve



Cable termination



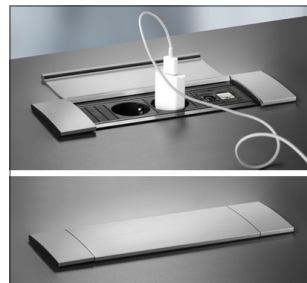
Bachmann Desk2



Bachmann Twist



Bachmann Power Frame



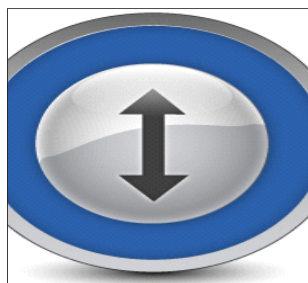
Bachmann Power Frame Cover



Pix plug unit



Wireless Charger



LO Move-App



# Organisation



Organisation requires a system. Concentration requires uncluttered surroundings. The textile privacy screen systems focus attention on the essentials. With three organiser systems to keep things in order. The multipurpose rail, the storage systems for the privacy and organiser screens and the “function” organiser system.



Multipurpose rail



Adapter for monitor arm



File box



Pen tray



Magnetic panel with pen tray



Magnetic panel with A4 tray



Magnetic panel with large tray



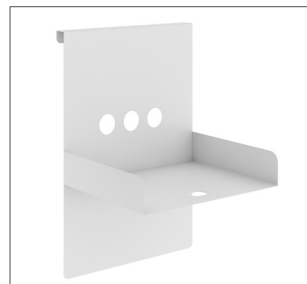
Magnetic panel with stationery tray



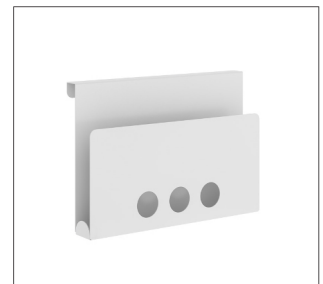
Privacy screen “formfleece”



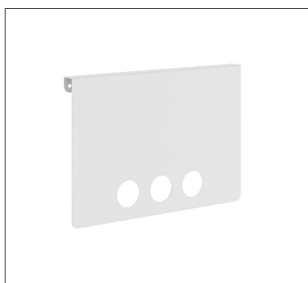
Privacy screen “screen”



A4 horizontal tray



A4 vertical tray

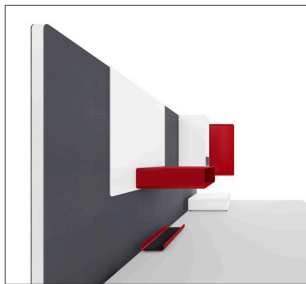


Magnetic panel, small /  
Magnetic panel, large

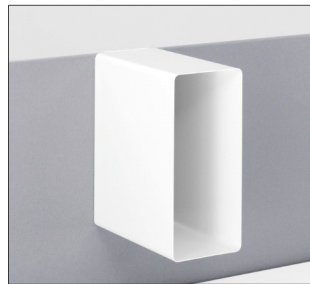


Pen tray

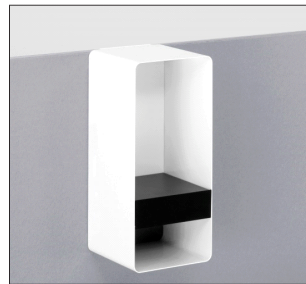
LO Extend also impresses when it comes to details – Organisation requires a system. One friendly on leveling functions and dimensions that are precisely coordinated with the LO drawer unit and LO desk. With three organiser systems to keep things in order. The multipurpose rail, the storage systems for the privacy and organiser screens and the “function” organiser system.



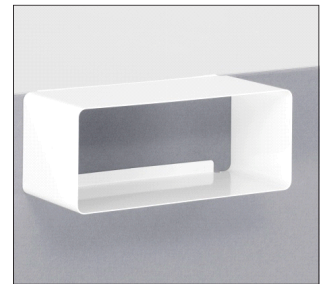
Privacy screen “function”



Panel box folder



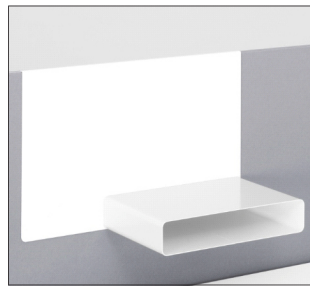
Vertical panel box with drawer



Horizontal panel box



Magnetic panel



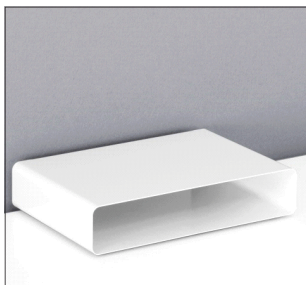
Magnetic panel with A4 compartment



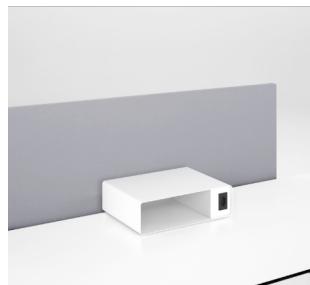
Magnetic panel with tray



“Function” organisational elements



Stackable A4 table tray



Desktop box with T13 plug socket

## Warranty

LOG Produktions AG guarantees Lista Office LO products for five years from delivery ex works. A five-year warranty period also applies to the electric motor systems used in the product ranges LO Extend, LO Choice and LO Pure. All other bought-in parts used in our own products (such as textiles, glass components, etc.) and/or electronic components (such as software, plug boxes, etc.) are guaranteed for two years from the date of delivery. Replaces all previous price lists. We reserve the right to make changes to the prices, designs and dimensions of products. LOG Produktions AG is certified in accordance with ISO 9001 and ISO 14001.

You can find care and maintenance instructions for your product on our home page. You can find information on how to assemble and use your product in the user manual .



<sup>1</sup>Für Zertifizierungsdetails zum Sortimentsumfang wird auf die C2C Übersicht (im Sharepoint - Portfolio Management - Dokumente) verwiesen.  
 Pour les détails de certification sur la gamme de produits, veuillez-vous référer à l'aperçu C2C (dans le Sharepoint - Gestion de portefeuille - Documents).  
 Per i dettagli sulla certificazione della gamma di prodotti, consultare la panoramica C2C (in Sharepoint - Portfolio Management - Documents).  
 For certification details on the product range, please refer to the C2C Overview (in the Sharepoint - Portfolio Management - Documents).

<sup>2</sup>Bis auf das Zubehör ist das Produkt PCV frei.  
 À l'exception des accessoires, le produit est exempt de PVC.  
 Ad eccezione degli accessori, il prodotto è privo di PVC.  
 Except for the accessories, the product is PVC free.

## Version

- Version 1.0, May 2017 (date created)
- Version 1.1, October 2018 (LO Colors update)
- Version 1.2, April 2020 (Product range expansion)
- Version 1.3, December 2020 (Certificates Update)
- Version 1.4, April 2022 (Range expansion 2200 and 2400)
- Version 1.5, January 2024 (Removal of the colours)

**Lista Office LO**  
**LOG Produktions AG**  
**Alfred Lienhard Strasse 2**  
**9113 Degersheim**  
**Switzerland**

**Telephone +41 71 372 52 52**  
**Hotline 0800 633 642**  
**info@lista-office.com**

**www.lista-office.com**